



Atlas Air/Carbon

User Manual



## Important Safety Information

### ⚠️ WARNING ⚠️

View [atlasbrace.com/sizing](https://www.atlasbrace.com/sizing) to properly fit before use. This Atlas Brace™ is only intended to help reduce certain Cervical vertebra injuries when combined with a certified full face helmet, and research shows you are better off in certain accidents if you are wearing a neck brace than if you are not. Regardless, a neck brace cannot protect against all impacts or injuries. For example, a neck brace cannot protect against injuries including, but not limited to the; Spinal cord, Thoracic or Lumbar vertebra, head, brain, or otherwise, including paralysis or death caused by these or other injuries. Because of the wide variety of accident scenarios, it is impossible to tell when your neck brace will or will not protect against injury or death. This device is not fire retardant and will melt/burn if exposed to fire and/or extreme heat.

**Knowing the risks involved with extreme sports activities, use this product at your own risk.**

## Product Certification

The CE marking on the P.P.E product (the neck brace) means that it has been tested, and meets the health and safety requirements of the EU Directive 89/686/EEC. Tests have been performed by RICOTEST, a Notified Body, located at Via Tione, 9 - Verona, Italy. No. 0498.

## Product Limitations

Wearing a neck brace does not eliminate the potential of a broken neck, just like helmets do not eliminate the potential for a head injury. Do not take greater risks while wearing this product because you feel safer while wearing it.

## Limited Lifetime Warranty

Subject to the following, Atlas Brace Technologies, Inc ("Atlas") warrants to the original purchaser of any Atlas Brace™ that the neck brace when new is free of defective materials and/or workmanship. Any claim under this warranty must be made when the defect is first discovered, and in no event more than three (3) years after the date of purchase. Atlas has the option to repair or replace the neck brace. Atlas' liability under this warranty shall not exceed the original purchase price. Atlas expressly disclaims any liability for incidental or consequential damages.

"Lifetime" refers to the lifetime of the product during real world use, and is limited to three (3) years. We recommend replacing the product no later than every 3 years.

To claim under this limited lifetime warranty, the neck brace must be returned with original proof of purchase, at the original purchaser's expense, with a letter which fully explains the claim, clearly marked **ATTN: Warranty**, and sent to the closest Atlas office or Authorized Distributor. A complete list of distributors can be found at [www.atlasbrace.com/distributors](https://www.atlasbrace.com/distributors). For USA, send to **Atlas Brace Technologies USA, LLC., 28010 Industry Dr., Valencia, CA, 91355**. For Canada, send to **Atlas Brace Technologies, Inc., #102 - 2762 190th St., Surrey, BC, V3S 3W6**.

This limited lifetime warranty is void if any other warranty or remedy is claimed or if the neck brace has been modified in any way, including but not limited to; Painting, drilling, cutting, melting, or the use of chemicals other than mild soap and water.

All other remedies, obligations, liabilities, rights, warranties, expressed or implied, arising from law or otherwise, are disclaimed by Atlas. This disclaimer shall be construed to include, but shall not be limited to, any claim implied warranty of merchantability, any claimed implied warranty arising from course of performance, course of dealing or usage of trade, and any claimed implied warranty of fitness.

Some countries, states, and/or provinces do not allow some or all of the limitations set forth herein, or the exclusion or limitation of incidental or consequential damages. This limited lifetime warranty does provide the original owner with certain legal rights and recourse and the original owner may possess other rights or recourse, depending on the location.

## Learn More

You can find more information, and learn more about the features of your Atlas Brace™ at [www.atlasbrace.com/braces](https://www.atlasbrace.com/braces).

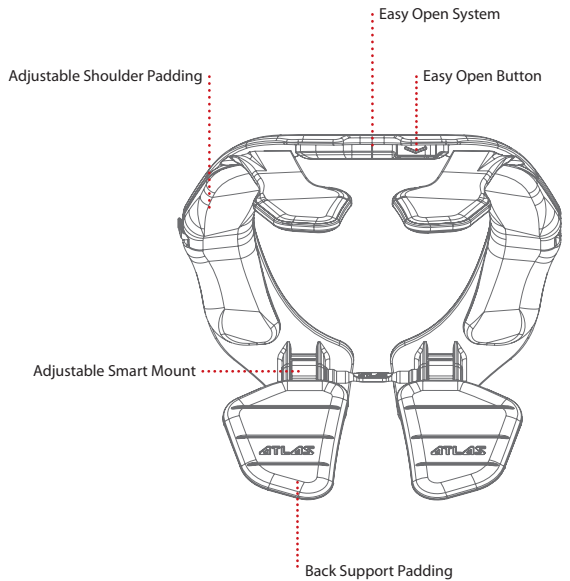
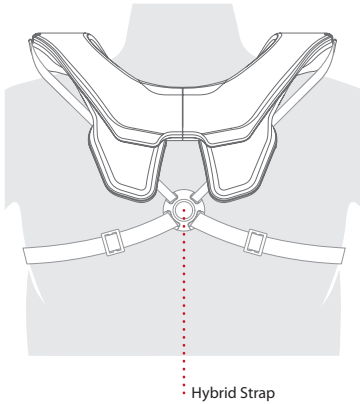
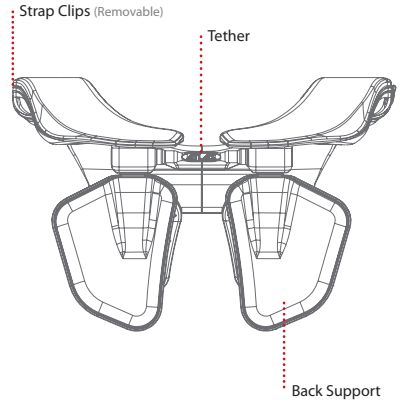
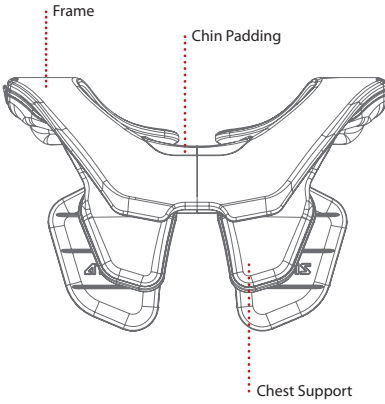
## Help and Support

You can find answers to your questions, download our printable sizing tape measure, download media, find a worldwide distributor, and much more at [www.atlasbrace.com/support](https://www.atlasbrace.com/support).



# Get to know your Atlas Brace™

We'd like to show you around

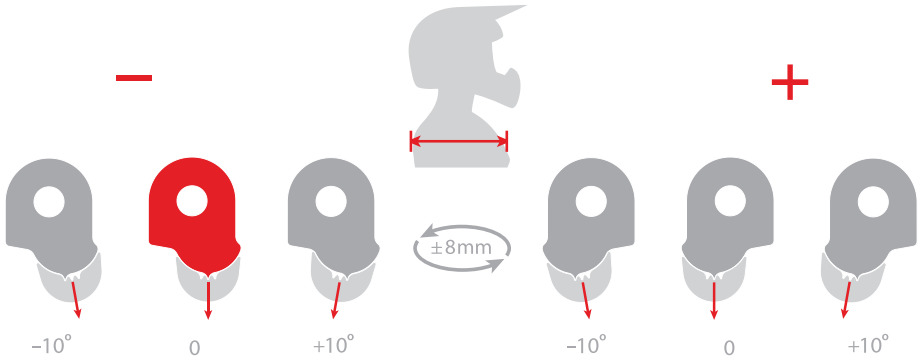




# Fit and adjust your Atlas Brace™

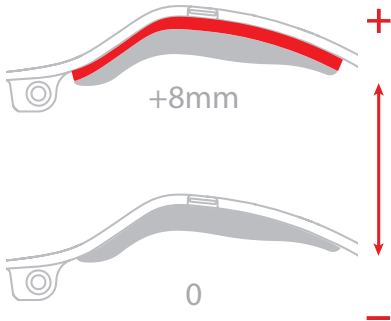
## Using the Smart Mounts

Atlas Smart Mounts feature 6 possible settings to create the best fit for your chest thickness and body type. The illustration below shows each of the 6 possible settings; smallest setting on the left, and biggest on the right. Each Atlas Brace™ comes with the setting shown in red, so use that as a starting point for adjustment. First, choose which mount position is right for you. If needed, simply reversing the mount from the standard position will increase the overall size of the brace. Second, choose which angle best suits your body type. The -10° setting best suits a thin build, the neutral/0° setting best suits an average build, and the +10° setting best suits a larger build.



## Height adjustment

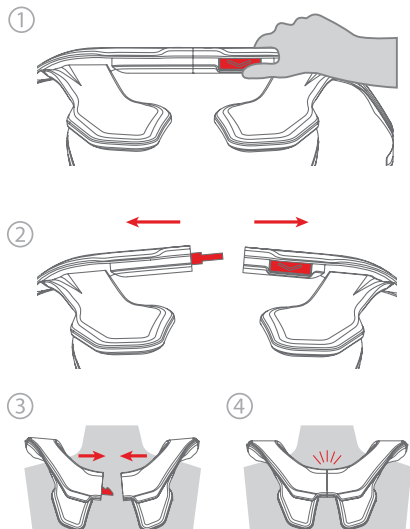
Your Atlas Brace™ features 2 possible height settings to create the best fit for your neck length and/or helmet style, as shown in the illustration below. The lowest setting is on the bottom, and the tallest setting is on the top. Each Atlas Brace™ comes standard in the tallest setting. Choose the setting which best suits you. The correct choice is the tallest one that still allows sufficient range of motion and eye sight to perform your type of activity safely.



## Using the Easy Open system

The Easy Open system is used to get your Atlas Brace™ on or off during normal use, and in emergency situations. To put the brace on using the Easy Open system, follow the 4 steps below:

- 1 - Push the red button on the front of the brace
- 2 - While pushing the button, pull the brace apart
- 3 - Put the brace on your body as shown
- 4 - Push the brace together till you hear a "click"



**Note:** Always test your range of motion prior to operating a motor vehicle to ensure proper visibility.



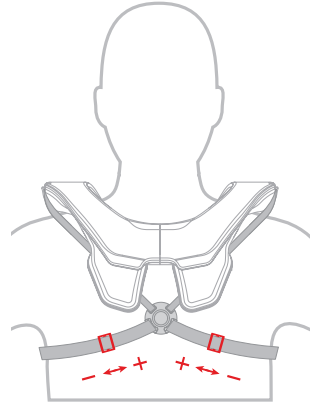
## How to use straps or protection with your Atlas Brace™

### Hybrid Strap

The Atlas Hybrid Strap is designed to help secure your Atlas Brace™ to your body, which helps avoid excessive movement of the brace during use. Minimizing brace movement greatly increases comfort, and also maximizes the potential safety capabilities of the product by keeping it in the optimum position on your body. The Hybrid Strap system can be worn either against your skin under a jersey, or over top of a jersey depending on your personal preference.

Wearing the Hybrid Strap is simple, put it on just like a T-shirt:

- 1 - Hold the Hybrid Strap so that the thicker straps are on the bottom, and the adjustment clips are facing forwards.
- 2 - Place your arms through each respective side, in between the big, and small strap... Just like putting on a T-shirt.
- 3 - Place your head in between the two small straps, and lower the strap on to your body.
- 4 - Once on your body, put on your Atlas Brace™, and lift each small strap into the strap clips attached to your brace. The straps will fall into the clips and secure your brace.
- 5 - Using the adjustment clips, adjust the strap to the desired size. Slide in to make it bigger, and out to make it smaller.

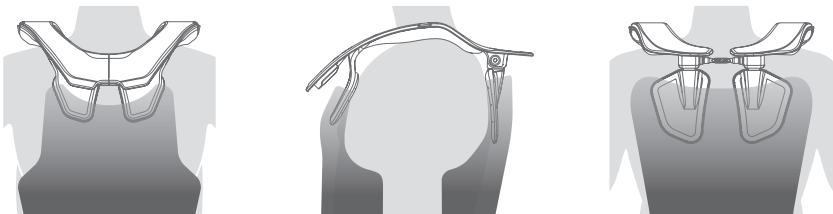


**Tip:** From a snug setting, loosen the strap off slightly for maximum comfort.

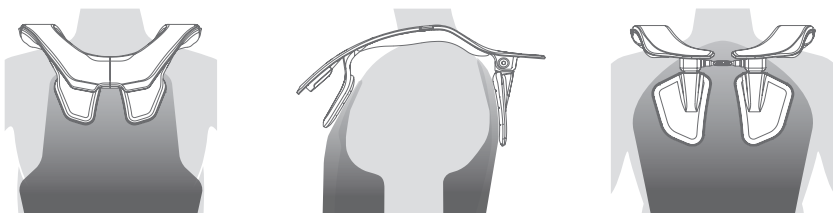
### How to use your Atlas Brace™ with body protection

Your Atlas Brace™ is designed to be compatible with many forms of body protection. Chest protectors, pressure suits, and various other protection items can integrate with your brace when used correctly. Atlas protection products are designed specifically for your Atlas Brace™, and will always provide the best results when combined with your brace. If you choose to wear other protection items, the success of how well they work cannot be guaranteed.

**Chest Protectors:** To get the best fit, it is important to remember a few key factors. First, the protector must have low profile, soft material shoulders so that the height of the brace is not greatly affected. Second, it is best to wear the front and back plate of the protector outside of your jersey, and over top of the chest and back supports of your Atlas Brace™ as shown below.



**Pressure suits and other base layer protection:** Wearing protection items under your jersey that are not designed to fit an Atlas Brace™ are not recommended, as it is always best for the brace to sit as close to your body as possible. To use non-Atlas friendly protection, the brace must fit around the added thickness of the protection in order to sit on top. If this scenario exists, it is best to adjust your brace to a bigger adjustment setting, or go up one size brace to accommodate for the added thickness of the protection item you choose to wear. Adjusting the height of your brace may also help the fit.





## Maintaining your Atlas Brace™

### Inspection prior to use

Your Atlas Brace™ should be visually inspected prior to each use. Always check for loose hardware and tighten if necessary. If a collision or accident takes place while this product is in use, visually examine all components thoroughly. If your Atlas Brace™ shows any sign of damage, including but not limited to; Cracking, deformity, or discoloration due to stress cracks, STOP using this product and return the product to the seller for inspection, or, in the alternative, discard and replace it. Do not attempt to repair this product yourself. No repair or replacement warranty will be honored on any Atlas Brace™ which is found to have been altered and/or repaired by anyone unauthorized to make any such repairs. The life of this product should not exceed three (3) years, and we recommend replacing this product no longer than every three (3) years to take advantage of advances in new safety technology, design, construction, features, and/or benefits.

### Cleaning

To clean your Atlas Brace™, wash it with mild soap and water and dry with a soft cloth. Depending on the model, some or all padding may not be removable, so please do not try to remove, or replace it. Do not use harsh chemicals or other common substances such as solvents, contact/brake cleaners, degreasers, etc. Chemicals can cause damage that may not be visible to the user which may compromise the effectiveness and/or safety of this product.

### Moving parts

Although each Atlas Brace™ is designed with as few moving parts as possible, there may still be a few. These include the Smart Mounts, and Easy Open system. In order to keep moving parts operating normally over time, it is important to use care when cleaning, washing, and using your Atlas Brace™ in poor weather conditions. The Easy Open system is designed to withstand adverse weather and harsh conditions. If the release button does not function smoothly, we recommend flushing the area surrounding the button with a steady flow of water to alleviate the problem. It is not recommended to disassemble the Easy Open system. If problems occur, reach out to us at [www.atlasbrace.com/contact-us](http://www.atlasbrace.com/contact-us) for support.

If the Smart Mounts are not allowing the back supports to fold smoothly we recommend disassembling the parts, thoroughly cleaning them, then reassembling them. A small amount of waterproof grease, or lubricant such as WD40 may be helpful to keep these parts operating smoothly over time. Be sure to take photos during each step of any disassembly to keep record of how each part will be reassembled. Use of blue Loctite (thread lock) is recommended for all bolts. Do not over-tighten hardware during reassembly, especially the rear axles. The back supports should be able to fold for storage with relative ease.

### Storage and transportation

Store in a dry, well-ventilated environment, avoid direct sunlight and extreme temperatures. During storage or transportation keep your Atlas Brace™ in its folded position to ensure no parts are extended or exposed. Do not place heavy objects on top of your Atlas Brace™ since compression can damage the integrity of structure of your Atlas Brace™.

### Modifications

Do not make any custom modifications to your Atlas Brace™. This includes, but is not limited to; Drilling holes, painting, cutting, heating, bending, or attaching items to this product in any way not outlined in this manual. Any such modifications may compromise the Atlas Brace™ and its effectiveness, safety, strength, and/or protection. Further, any modifications made to the Atlas Brace™ will void all warranty claims.

### Replacement parts

Replacement parts are available for every Atlas product. Certain parts are not user replaceable, and therefore not available to purchase. If a part is damaged and not available to purchase, please contact us at [www.atlasbrace.com/contact-us](http://www.atlasbrace.com/contact-us). You can view our available replacement parts by going to [www.atlasbrace.com/atlas-parts](http://www.atlasbrace.com/atlas-parts).



**Head Office**

Atlas Brace Technologies, Inc | Surrey, BC, Canada | 604 542 5661

**USA**

Atlas Brace Technologies USA, LLC | Valencia, CA | 661 505 4407

atlasbrace.com |    